

TO BE PUBLISHED IN
THE WEBSITE OF DOE

සියලු ම හිමිකම් ඇවිරිණි
[முழுப் பதிப்புரிமையுடையது.]
All Rights Reserved]

ශ්‍රී ලංකා විභාග දෙපාර්තමේන්තුව / இலங்கைப் பரீட்சைத் திணைக்களம் /

Department of Examinations, Sri Lanka

Open Competitive Examination for Recruitment to Grade III of the
Sri Lanka Teacher Educators' Service - 2015 (2016)

(02) Comprehension and Case Study

Two hours

Part	Ques. No.	Marks
I	1	
	2	
	3	
II	4 (i)	
	4 (ii)	
	4 (iii)	
Total		
Marking Examiner:		
Checked by:		

● Answer all questions on this paper itself.

Index No:

Part I - Comprehension

1. Select **one** of the following topics and write an analytical essay using about **300** words.

- (i) Role of the school teacher to build a generation of students accomplished with knowledge and discipline.
- (ii) Suitability of formulating the education in Sri Lanka on the basis of Trilingual Concept.
- (iii) Benefits that the students can gain through new technical equipments introduced for the school education.
- (iv) Contribution of literary and musical media of arts for developing the human character.
- (v) The measures that can be taken to get rid of drug-trafficking from the world which is a threat to mankind.

.....

.....

.....

.....

.....

.....

.....

.....

.....

.....

.....

.....

.....

.....

.....

.....

.....

.....

.....

.....

.....

[See page two.

A large rectangular area with a black border, containing numerous horizontal dotted lines for writing.

Department of Examinations, Sri Lanka

Department of Examinations, Sri Lanka

2

3 TO BE PUBLISHED IN THE WEBSITE OF THE I.D.E.S.

.....

(30 marks)

2. Express the content of each passage in **one sentence** and explain the terms in **bold typed**.

(i) Halting the spread of arms and reducing and eventually eliminating all weapons of mass destruction are major goals of the United Nations. **The UN has been an ongoing forum** for disarmament negotiations, making recommendations and initiating studies. It supports multilateral negotiations in the Conference on Disarmament and in other international bodies. These negotiations have produced such agreements as the Nuclear Non-Proliferation Treaty, the Comprehensive Nuclear - Test-Ban Treaty and treaties establishing nuclear-free-zones.

.....

(ii) The resultant loss of income due to the chronic kidney disease adversely impacts the socio economic condition of the entire family. Sri Lanka lacks a comprehensive formal social support system, the loss of productivity from the kidney diseases and the costs of care in terms of consultation, drugs, **dialysis and transplantation**. Therefore this could push families and communities to economically unstable positions.

.....

Department of Examinations, Sri Lanka

(iii) The United Nations Programme on Reducing Carbon Emissions from **Deforestation and Forest Degradation** aims to mitigate the adverse effects of climate change. It is necessary to determine the key drives of deforestation and forest degradation in Sri Lanka. Groundwork studies and research work in this regard were conducted.

.....

.....

.....

.....

.....

(iv) The establishment of high quality non-state sector education institutions in **vocational and technical fields** is important. Vocational education can prepare students to work in professional fields such as Hospitality, Nursing, Mechanical, Plumbing, Carpentry, Pharmaceutical and Quantity Surveying etc. Hence, these institutions can create a qualified skilful workforce to cater to growing market and industrial needs, domestically and abroad.

.....

.....

.....

.....

.....

(05 × 4 = 20 marks)

3. Read the following text and summarize it into **one third** of its word number and give a suitable **title**. Indicate the **numbers of words** used at the end of summary.

The education system plays a vital role in-creating a productive workplace, which possesses appropriate knowledge and skills. Recognizing the importance of a dynamic education sector which can meet the requirement of the changing needs of the labour market, a series of changes has been initiated by the government. In doing so, the strengthening of capacity improvement a quality and relevance of primary, secondary and higher education sectors have been identified. At the same time, the need to improve technical and vocational training to fill the knowledge gaps has also been recognized. In reshaping the education sector, it should be noted that the education policy, in general , has to be closely linked with the labour demand and economic policy of the country.

It has been recognized that the general education system requires substantial modernization to create the human capital foundation of the country needed to emerge as

[See page five.

TO BE PUBLISHED IN
THE WEBSITE OF DOE

knowledge hub. With the aim of re-designing the education policy, steps have been initiated to draft a new education act. It is envisaged that this new legislation would ensure accelerated and optimally qualitative educational development. At the same time, measures are also being taken to introduce reforms to the general education system such as moving towards a competency based curriculum from an examination oriented content based curriculum, promoting English and IT in Education and providing opportunities for children to gain life skills.

Since Sri Lanka is poised to realize faster growth and thereby move into the upper middle income status, the country needs to formulate robust Knowledge Economy oriented strategies and reform appropriate sectors at the national level. Since the improvement that has so far been made is limited., it is important to focus on improving the country's rank in the areas of ICT, innovation and economic incentive regime.

.....

.....

.....

.....

.....

.....

.....

.....

.....

.....

.....

.....

.....

.....

.....

.....

.....

.....

.....

.....

.....

.....

.....

.....

.....

(20 marks)

Department of Examinations, Sri Lanka

Part II - Case Study

4. Read the following case/incident and answer the given questions in relation to it.

The Rajapura College of Education was a College of Education established ten years ago in a Teacher Training College land. The buildings of the Teacher Training College was renovated and the College of Education was started while in addition to the furniture and equipment owned by the Teacher Training College, 10 computers and the necessary accessories to these was also given to the College of Education at that time. Thereafter, during the past 10 years no capital goods were supplied to the College of Education while no financial provisions for repairing building was granted except the annual funds given for minor repairs.

Now, for this College of Education about 150 students are recruited annually for courses in the fields of Primary Education, Language Arts and Social Studies. At this time, the President resides in the teacher quarters occupied by the Principal of the former Teacher Training College while, some lecturers reside as bachelors in few rooms in the student hostels. The other lecturers and the non academic staff have to stay on rent in neighbouring houses in the village or have to travel from their homes by public transport services. Because of this as a habit most of them come to work late while they also try to return early. As a result the responsibility of supervision of student co-curricular activities before and after the commencement of the academic work and resolving of disciplinary problems has to be carried out by the President and the few lecturers who are residing in the hostel. They also engage in these activities reluctantly.

Because of the acute congestion in the hostels, the students make use of the lecture halls to engage in their studies even after the lecture periods. But the frequent interruption of electricity is an obstruction to them. There is no conference hall where all students can gather. Even though there is a water supply to the hostels through piped water from the Water Board, the water supply is reduced to a low level in the morning specially when the students are getting ready for their academic work. For bathing and for washing cloths they have to go to a well in a back yard of a garden. The lack of adequate toilet and latrine facilities is an obstacle for students to get ready in time for their educational activities. The food for the students in the hostels are prepared in a semi permanent building. There is a gas cooker in it, but since it is not adequate to cook all food, fire wood hearths are used to cook the main foods.

Most of the computers are not in working condition, while up to date Multimedia projectors, Digital Photo Copiers and Internet facilities have not being provided. Even though there is a large number of old books in the library, the space there is not adequate. The preparation and updating of books is done manually. A flat land about two acres are available as a play ground but there are no other facilities to engage in sports. Due to the non maintenance of the barbed wire fence around the College of Education, damage is done constantly to the vegetables, fruits and flower plants planted inside the college land by the cattle of the neighbouring houses and from the cattle owners who bring the cattle. There have been numerous instances of nefarious activities and thefts by indisciplined youth from the neighbouring village who enter into the college land.

The administration and the students have constantly submitted requests regarding the lack of facilities in the College of Education to the relevant authorities. As a result a letter has been received by the President from the Commissioner of Colleges of Education stating that 10 million rupees has been allocated next year for reconstruction of the College of Education and to submit a project plan including the requirements to be fulfilled from that allocation along with a draft estimate.

- (i) State **according to priority** 10 projects you think that should be included in the project plan which is prepared to fulfil the requirement from the financial provision allocated to the Rajapura National College of Education for the next year.

.....
.....
.....
.....
.....
.....
.....
.....
.....
.....

(10 mark)

- (ii) Separately explain briefly the reasons which led you to choose in order of priority the first two projects named in the project plan.

(a)

.....
.....
.....
.....
.....
.....
.....
.....
.....
.....
.....
.....

(b)

.....
.....
.....
.....
.....
.....
.....
.....
.....
.....
.....
.....

(05 ×2 =10 marks)

Department of Examinations, Sri Lanka

Department of Examinations, Sri Lanka

(iii) Explain briefly what is the contribution in general for the qualitative educational development of the College of Education by implementing the project you have named.

.....

.....

.....

.....

.....

.....

.....

.....

.....

.....

.....

(10 marks)

Department of Examinations, Sri Lanka

Department of Examinations, Sri Lanka

සියලු ම හිමිකම් ඇවිරිණි]
முழுப் பதிப்புரிமையுடையது.]
[All Rights Reserved]

TO BE PUBLISHED IN
THE WEBSITE OF DOE

ශ්‍රී ලංකා විභාග දෙපාර්තමේන්තුව / இலங்கைப் பரீட்சைத் திணைக்களம் / Department of Examinations, Sri Lanka

Open Competitive Examination for Recruitment to Grade III of the
Sri Lanka Teacher Educators' Service - 2015 (2016)

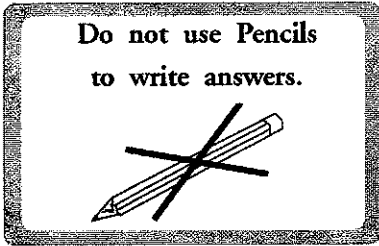
(03) Elements in Education

One hour

Instructions to Candidates

Very Important

Do not use Pencils
to write answers.



- * Answer scripts where the numbers are not written as indicated below will not be marked/evaluated.

1 2 3 4

Write your Index Number here and
on page 3 in the spaces indicated.

.....

Checked as correct

.....

Invigilator's Initials

Important :

- * This paper consists of 50 questions on 07 pages.
- * Before answering the paper arrange all the pages in order.
- * Answer all questions on this paper itself.
- * The time allowed for this paper is one hour.
- * Commence answering only after the Centre Supervisor's announcement.
- * Instructions given should be strictly followed in answering this paper and marks will not be awarded for answers not in accordance with these instructions.
- * Even if you are not attempting the paper hand it over to the Supervisor.
- * Write the answers clearly and legibly in blue or black ink only and not in pencil.
- * It is an offence to remove this paper from the examination hall or turn out photocopies of the same.
- * Answer scripts with illegible figures, illegible handwriting, those where erasing fluid has been used and written in pencil will not be marked/evaluated.

For Examiner's use only

Page No.	Question No.	Marks Awarded
2	1 - 9	
3	10 - 17	
4	18 - 25	
5	26 - 34	
6	35 - 46	
7	47 - 50	
Total		

Final Score

In figures	
In words	
Marking Examiner	
Checked by	

● Select the correct or the most appropriate answer to question No. 1 to 30 and write the relevant number of the answer on the dotted line provided.

1. What is the main goal of Educational philosophy presented by Plato?
 - (1) To bring about a civilized, just and moral society.
 - (2) To bring about a person with a balanced personality.
 - (3) To bring about a good and responsible citizen.
 - (4) To distribute resources equally and fairly. (.....)

2. Who was the philosopher who presented the important idea, "Emil knows a little, but what he knows is his own. And also he knows it well" to the field of child education?
 - (1) John Dewey
 - (2) Plato
 - (3) Jean Jacques Rousseau
 - (4) Mahatma Gandhi (.....)

3. To which Educational thinking does the concept of John Dewey's philosophy belong?
 - (1) Idealism
 - (2) Naturalism
 - (3) Existentialism
 - (4) Utilitarianism (.....)

4. To which of the following occasions the educational goals and objectives are most important when planning is done in a school?
 - (1) In planning physical resources efficiently.
 - (2) In building up a vision and mission statement.
 - (3) In determining the human resources needed.
 - (4) In planning annual timetables. (.....)

5. What does the sociometric test method provide?
 - (1) Measures how much a person likes another person.
 - (2) Measures the relationship that exists between one social group with another group.
 - (3) Formulate a plan suitable for a sociometric graph.
 - (4) Reveals the relationship between isolates and social stars. (.....)

6. Which theory has discovered that the missing important aspects in a sub-culture of lower social groups stand as a barrier to the education of children of that social group?
 - (1) Theory of Interrelationship
 - (2) Cultural Deprivation Theory
 - (3) Field Theory
 - (4) Cultural Capital Theory (.....)

7. Which is the most suitable categorisation for introducing social groups which are functioning in a present educational institution?
 - (1) Horizontal groups and vertical groups
 - (2) Small groups and large groups
 - (3) Internal groups and external groups
 - (4) Formal groups and informal groups (.....)

8. Which one of the following indicates the most suitable nature of the relationship that should exist between social changes and education?
 - (1) Education should be changed, taking the social changes into consideration.
 - (2) Education should be a pioneer in social transformation.
 - (3) Changes in the society should change the education and changes in the education should change the society.
 - (4) Social changes as well as educational changes should take place in a country. (.....)

9. According to the role of a teacher at present, which name is used to introduce the concept of directing students to learn according to their needs, abilities and willingness?
 - (1) Transmission role.
 - (2) Transformation role.
 - (3) Transaction role.
 - (4) Management role. (.....)

10. Which of the following **cannot** be a reason for conflicts in the role of the teacher?
- (1) Inequality of expectations of those belonging to the roles of groups.
 - (2) Changes of the behaviours of the role according to the person and the occasion.
 - (3) Working according to the order, with the people who influence the role.
 - (4) The teacher has to carry out several roles. (.....)
11. When comparing the teacher's role with other professions, which is the most significant difference in the teacher's role?
- (1) Holding authority and many responsibilities
 - (2) More opportunities to work with a live group
 - (3) Having to work as a service more than as a right
 - (4) Having freedom for taking professional decisions (.....)
12. Out of the following actions, which **cannot** be accepted as a part of the teacher's role?
- (1) Being the secretary of the school development society
 - (2) Spending more time on reading supplementary books relevant to the subject
 - (3) Teaching religion in Dhamma School on Sunday
 - (4) Visit student's homes in the afternoons to teach (.....)
13. Which one is **not** an educational principle of UNESCO?
- (1) Education should be a service rendered with the will of public.
 - (2) School facilities for the education in a country should be given free.
 - (3) For education, students should not be sent to institutions other than government schools.
 - (4) Students with difficulties should be helped without disturbing the parents' freedom. (.....)
14. To succeed in the principle of equal opportunities in education, on what occasions should the equity be accepted?
- (1) Admission to education, staying on, educational achievement and educational benefits
 - (2) Admission to education, staying on, educational selection and achievements
 - (3) Learning in mother tongue, admission to school, selection of subjects streams and educational outcomes
 - (4) Preschool education, primary admission, secondary education and higher education (.....)
15. What factor is **not** an indicator of progress of education in Sri Lanka?
- (1) High average of the number of years that student stay in the school.
 - (2) Teacher students ratio remaining as 1:17.
 - (3) Adult literacy rate remaining as 98.1%.
 - (4) The strong and competitive demand for some schools. (.....)
16. Which of the followings **does not** agree with the UNESCO's recommendation for the planning of the education of a country?
- (1) Formulating the education to suit the needs and resources of a country
 - (2) Need of long term plans instead of short term plans
 - (3) Planning not only quantitative development but also qualitative development
 - (4) Produce a group of teachers who are able to teach in the mother tongue (.....)
17. Which is the correct statement regarding the relationship between planning and management?
- (1) To get maximum benefits from limited resources management is more important than planning.
 - (2) Management should precede planning.
 - (3) These two activities enrich one another.
 - (4) Efficiency for management and effectiveness for planning are needed. (.....)

18. According to the circular No. 2005/24, what are the **two** Boards that are to be set up to make decisions about school management under the school upgrading programme?
- (1) School Development Committee and School Management Group
 - (2) School Management Committee and Supervision Committee
 - (3) School Based Management Committee and School Development Committee
 - (4) School Committee and School Development Union (.....)
19. Which is the most important factor when the suitability of an educational test is considered?
- (1) Whether the answers to questions can be marked without being subjective.
 - (2) Whether the test covers all the areas of the relevant subject.
 - (3) To what extent the mark awarded to the answer script indicates the correct level of the achievement of the relevant characteristic.
 - (4) Whether questions have been included to assess different intellectual abilities. (.....)
20. In a student performance assessment, which of the following characteristics is meant by the term 'Authenticity'?
- (1) Practicability
 - (2) Ability to award a reliable mark
 - (3) Assessment is based on the school
 - (4) Relevance to real life (.....)
21. Which statement is correct with regard to the Z-score that is used for transforming scores?
- (1) Scores are exactly normally distributed.
 - (2) Scores are suitable for the use of norm reference evaluation.
 - (3) Can be used to assess the achievement level of students.
 - (4) $Z = 0$ shows the median mark. (.....)
22. When conducting a lesson using group activity-based method, what is the most suitable method for dividing the student of a class into five groups?
- (1) Divide the groups according to the teacher's interest.
 - (2) Call numbers from 1 to 5 and put students with similar numbers into one group.
 - (3) Divide the groups according to friendship among students.
 - (4) Divide the groups to suit the physical resources of the classroom. (.....)
23. Which of the following learning methods helps to go beyond the existing data and build up a new insight?
- (1) Discovery Method
 - (2) Programmed Learning
 - (3) Problem Solving Method
 - (4) Role Playing Method (.....)
24. Which is the **incorrect** statement regarding teaching and learning styles?
- (1) Teachers with similar qualifications have various teaching styles.
 - (2) Teacher's teaching style should match with the student's learning style.
 - (3) In the same class there are students with various learning styles.
 - (4) In teaching, various learning styles are not barriers. (.....)
25. Relevant to education technology, which statement clearly shows the truth of the Chinese saying "One picture is worth thousand words"?
- (1) Vision is important and should be protected.
 - (2) Through vision more concrete experiences can be gained with less effort.
 - (3) Many things can be taught through verbal statements.
 - (4) Vision is very useful to gain abstract experiences. (.....)

26. Which of the following specific characteristics of models is very useful to gain a correct and clear understanding about 'Concepts' during the teaching process?
 (1) Make a large thing small (2) Make a small thing large
 (3) Three-dimensional nature (4) Prepared according to a scale (.....)
27. Which is the best map prepared according to the principle of Psychology "figure and background" to make it easy to teach the ancient capitals of Sri Lanka?
 (1) The rough map drawn to show the capitals of Sri Lanka.
 (2) The large printed Sri Lanka map borrowed from the library.
 (3) The map of Sri Lanka prepared according to the scale with towns, historical places, physical location and resources.
 (4) The accurate map of Sri Lanka with only the ancient capitals marked. (.....)
28. Which is the best research method to solve the literacy problems of several students in a classroom?
 (1) Descriptive research (2) Experimental research
 (3) Action research (4) Evaluation research (.....)
29. In doing a research, what does a "Pilot Test" mean?
 (1) A library research in which references needed for a research are done.
 (2) A test that is used to validate test instruments.
 (3) A test which focuses research assistants to relevant targets.
 (4) A research leading to learn from an achievement test. (.....)
30. What is the method of observation that helps to gather most accurate and realistic data?
 (1) Participatory observation (2) Direct observation
 (3) Formal observation (4) Indirect observation (.....)

● Write the correct answer for question No. 31 to 50 on the dotted lines.

31. Name the **three** main domains presented by Benjamin S. Bloom in his classification of educational objectives.
 (i)
 (ii)
 (iii)
32. What are the other **two** sections of education that should be reformed with formal education sector for forming an education-centered society?
 (i)
 (ii)
33. Write **two** approaches in the school curriculum, which is used for transmitting the culture.
 (i)
 (ii)
34. Mention **two** needs identified as necessary for safeguarding equal opportunities in education without being influenced by social class.
 (i)
 (ii)

35. What is the name given to the education suitable to a society in which two or more cultures work together?
.....
36. Name the **two** main fields in which the role of a teacher has been categorised in a meaningful way.
(i)
(ii)
37. Mention **two** main conflicts identified in relation to the role of a teacher according to the Role Theory.
(i)
(ii)
38. Name the **two** committees ordered to be appointed in 2016 to implement compulsory education principle for Sri Lankan students?
(i)
(ii)
39. According to the circular No. 2016/1, how is the second national language defined when deciding the number of teachers according to subjects in schools of Sri Lanka?
.....
40. Name the **two** educational planning approaches in which education is considered as an investment.
(i)
(ii)
41. Name the concept and the board respectively, relevant to the decentralisation strategy introduced for upgrading schools by the National Education Commission in 1996.
(i)
(ii)
42. What is the main factor to be considered as the basis, when preparing an assessment form for a subject or a lesson?
.....
43. Name **two** techniques of assessing abilities that are **not** cognitive.
(i)
(ii)
44. In a question paper, what is the name for the indicator of the level of difficulty or easiness of a question for a candidate?
.....
45. Name the teaching method originated with the purpose of developing a single skill of a teacher during teaching practice by using a small group within a short period of time.
.....
46. Name the self-learning method which has been designed according to the Stimulus Response Theory of B.F. Skinner.
.....



TO BE PUBLISHED IN
THE WEBSITE OF DOE

47. What is the essential principle to be considered when selecting an audio visual aid for a lesson?
.....

48. What is the modern technological equipment that can display writings as well as pictures of any paper enlarged colourfully?
.....

49. Name the **two** types of research that has been named according to the nature of the data collected.

(i)

(ii)

50. Indicate in order, the **two** names used for denoting the whole group relevant to research on education and the group subjected to the research.

(i)

(ii)

* * *

Department of Examinations, Sri Lanka



Department of Examinations, Sri Lanka

Department of Examinations, Sri Lanka